

ELECTRIC WEED CONTROL PRODUCTS CATALOGUE 2025



Prices are subject to change and are recommended retail prices without VAT.
When ordering, please seek a formal quotation from Kersten UK or an authorised Kersten Dealer.

Page	Contents
P.2	Contents
P.3	Principle of Electric Weed Control
P.4 - 5	Zasso Zap Weeder - Non-selective electric weeding device
P.6 - 7	Kersten Electric Lance - Selective electric weeding device

Kersten Integrated Weed Management Solutions

Weed Prevention

SWEEPERS

Kersten sweepers have been designed specifically for effective removal of detritus on hard surfaces. The 5 row spiral brushes are configured to effectively move bulky, heavy material such as soil, allowing your hard surfaces to stay clean and dry out more quickly to prevent moss from taking hold.

Kersten sweepers can be fitted with collection boxes and gully brushes to make collection of material easy, even right up to a kerb edge.



Weed Control

Hot Water Weed Control

Hot water weeders deliver boiling water directly to the base of weeds, effectively killing both the plants and their root systems. This method not only targets young, fleshy weeds but also sanitizes the soil, reducing the chance of future growth. By rapidly heating the plant tissues and penetrating the soil, hot water weeders ensure thorough treatment, promoting healthier garden ecosystems.



Weed Control

Hot Air Weed Control

Hot air weeders employ a concentrated stream of hot air to eliminate weeds without harming surrounding plants. They are particularly effective on young, fleshy plants, which lack the energy reserves of older, established species. By raising the temperature of the weeds, hot air disrupts their cellular structure, leading to rapid and effective removal. Ideal for flower beds, gardens, and pathways, these tools allow for precise targeting.



Weed Control

Electric Weed Control

Weeding with electricity, is a fast, economical and extremely effective method of weeding. We offer a full range of products, from hand held, and walk behind, through to tractor and side arm mounted machines, ensuring the right products for a wide variety of applications. Weeds will wilt almost immediately and will dry off within 3-4 days. Because the treatment is systemic, there is far less regrowth than with other thermal methods, resulting in fewer applications per year for perennial plants.



The principle

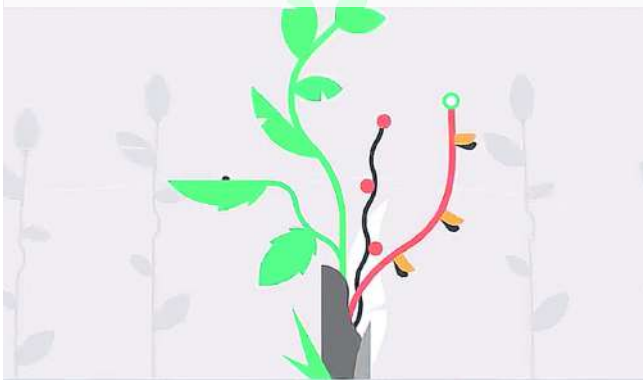
The **electric** weeding system operates on electrophysical principles. The device generates a very high current pulse, thereby eliminating unwanted plants in a targeted manner. The power module generates the necessary high voltage, transferring it through a positive electrode into the plant. The electricity follows the easiest path to the ground electrode. Since weeds are water-rich, they act as a conductive pathway. The energy heats and boils the water inside the plant, rupturing its cells and breaking down its structure, effectively killing the weed.

The result:

- The plant's chlorophyll is immediately damaged, the cells are irreversibly destroyed and die
- The water supply to the cells is interrupted
- The plant dries out

The right amount of energy and optimized ground contact are decisive for the effect: Plants with a high water content compared to their leaf mass, with few stems and roots, require little energy and are easy to treat. Very dense and woody wild herbs or very large plants require a lot of energy. In these cases, the method may combine remediation action to achieve the best results, as the young new shoots carry a particularly large amount of water and therefore direct the flow more successful into the plant. Plants with larger rootstocks or rhizomes are severely weakened and sometimes have to be treated several times before they are completely destroyed.

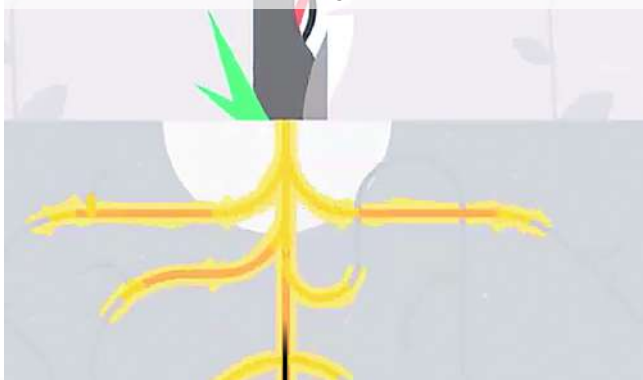
Precise treatment of the targeted weed plant



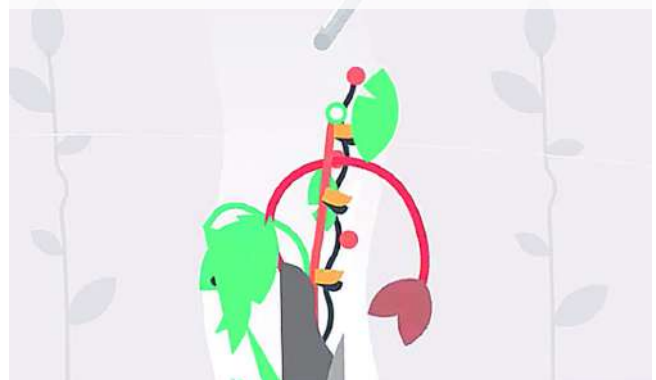
High current flows through the plant, disrupting its internal cellular structure



The current travels through the plant and deep into its roots, then back to the ground electrodes



The root dies and with it the plant, it can no longer grow back

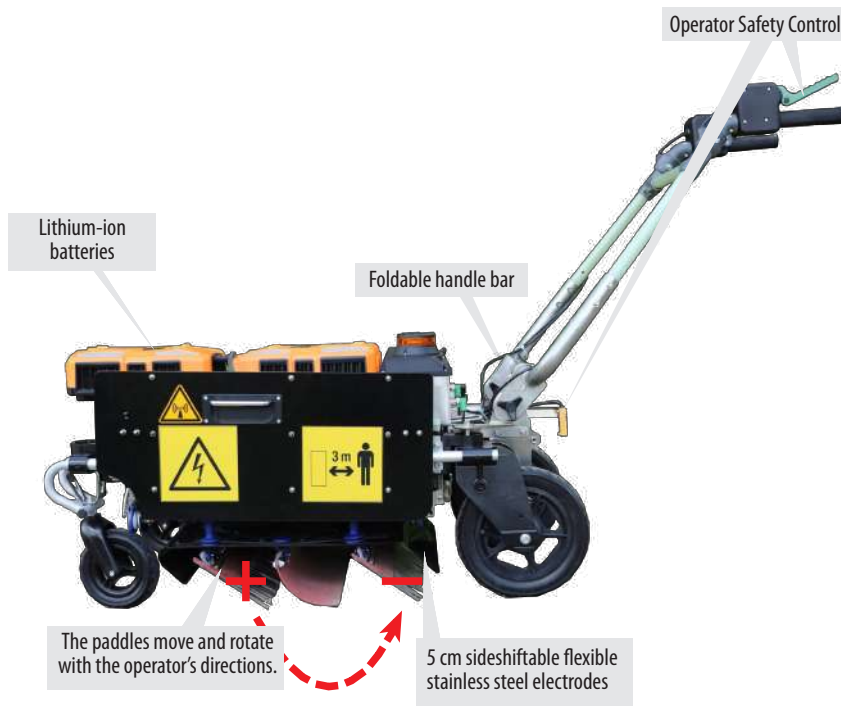


Zasso

zasso™

ZAP Weeder

Non-selective electric weeding device



Specification

Power Supply	Electric - 2 x Pellenc ULIB 1500 (Lithium-ion) Battery
Battery specifications	Voltage 43.6V; Capacity: 34.5 Ah Output current: 0 - 2 A; Protection class: IP54; Recharge time: 5 hrs (90%) w/ 7.6A fast charger
Battery weight and dimensions	Weight: 7.5Kg Dimensions: 250x140x85mm
Dimension - Unfolded (L X W X H)	1867 x 670 x 1140 mm
Weight	69kg (excl. batteries)
Power Output	Max 2000w
Output Voltage	10kV
Output Current	0 - 2 A
Noise	<80dB
Travel	Forward/Reverse
Sideshift	5 cm on either side
Application Width	60cm

Surface-Contact Approach

The Zap Weeder uses flexible positive and ground stainless steel electrodes to deliver high-voltage current across all surfaces they touch. It effectively treats areas by contacting and targeting everything between the electrodes, ensuring efficient weed control without selective targeting.

+ Positive electrodes

— Ground electrodes



Zasso is proud to have developed the world's first battery-powered, walk behind electric weeding device. The ZAP Weeder offers a unique combination of efficiency, safety, sustainability and ease of use. The ZAP Weeder uses electricity to heat all plant cells, causing the weed, including the roots, to die. Its proprietary side-shift function, allowing weed treatment right up to the kerb, wall, or obstacle. The device is both efficient and sustainable. It does not affect underground cables, surrounding infrastructure, or third-party properties.

The ZAP Weeder is fully battery-powered, ensuring no CO2 emissions and simple operation, with low noise and low vibration. The Pellenc ULIB 1500 batteries provide autonomy for up to 4 hours of continuous weeding, and can be easily removed and charged. Its quiet function ensures minimal noise disruption, making it ideal for use in noise-sensitive areas and at quieter times of day. CE certified and built for professional use, the ZAP Weeder meets the highest standards of quality and performance.

Model Number	Description	Price
Zap Weeder 5.3	Walk behind Electric Weeder	£34500

Required accessories		
Part Number	Description	Price
ULB15N	Pellenc Battery to suit Zasso Zap Weeder 5.3 *Requires 2*	£1950
CHA330	Pellenc Battery Charger	£120
KEW002	Safety Boots	£120

Electric Weed Control results



Start - 11 July 2024



15 July 2024



Kersten Electric Lance

Selective electric weeding device



Specification

Lance with handle length [cm]	170 cm
Treatment cable [m]	20 m
Connecting cable [m]	7 m
Dimension of power modul (L X W X H)	1867 x 400 x 330 mm
Power Modul Weight	140kg

Safety first

The Kersten electric lance system is equipped with a variety of security features:

- Safety circuit continuously checks all electronic components and switches off if necessary or does not switch on
- Circuit breakers on both earthing plugs confirm a safe earth fault
- 2-point operation for safe working
- Annual certified application training
- Emergency stop function on the lance and on the device

Targeted Approach

Kersten Electric Lance delivers high-voltage current through the precise tip of an electric lance. The current flows into the plant upon contact, traveling through its roots and back to a grounding spike. This approach focuses on selective, targeted weed control by treating only what the lance touches, making it ideal for precise applications.

+ Positive electrodes

— Ground electrodes



Introducing the Kersten Electric Weeder

The Kersten Electric Weeder is a revolutionary solution for eliminating weeds using advanced electrophysical technology. This cutting-edge system targets unwanted plants with a high-current pulse, effectively destroying their internal structure.

How it Works:

The device generates a high-voltage current that flows from the lance, through the plant, and into the subsoil. A ground spike completes the circuit, allowing the energy to pass through the weed. This energy boils the water within the plant, causing irreparable damage to its cells and ultimately destroying it.

Factors Affecting Effectiveness:

Plant Water Content: Plants with high water content and fewer stems/roots require less energy for effective treatment.

Plant Density and Size: Dense, woody, or large plants may require more energy or combined methods (e.g., mowing followed by treatment of new shoots).

Root Systems: Plants with extensive rootstocks or rhizomes may need multiple treatments for complete destruction.

Benefits of the Kersten Electric Weeder:

Targeted Weed Elimination: Precisely eliminates unwanted plants without harming surrounding vegetation or soil.

Environmentally Friendly: No chemicals or hazardous residues are involved, making it safe for use near water and sensitive habitats.

Efficient and Effective: Offers a fast and effective way to control invasive species like Japanese Knotweed and Giant Hogweed. Switch for selecting the amount of current 3000/ 4000/ 5000 Volt

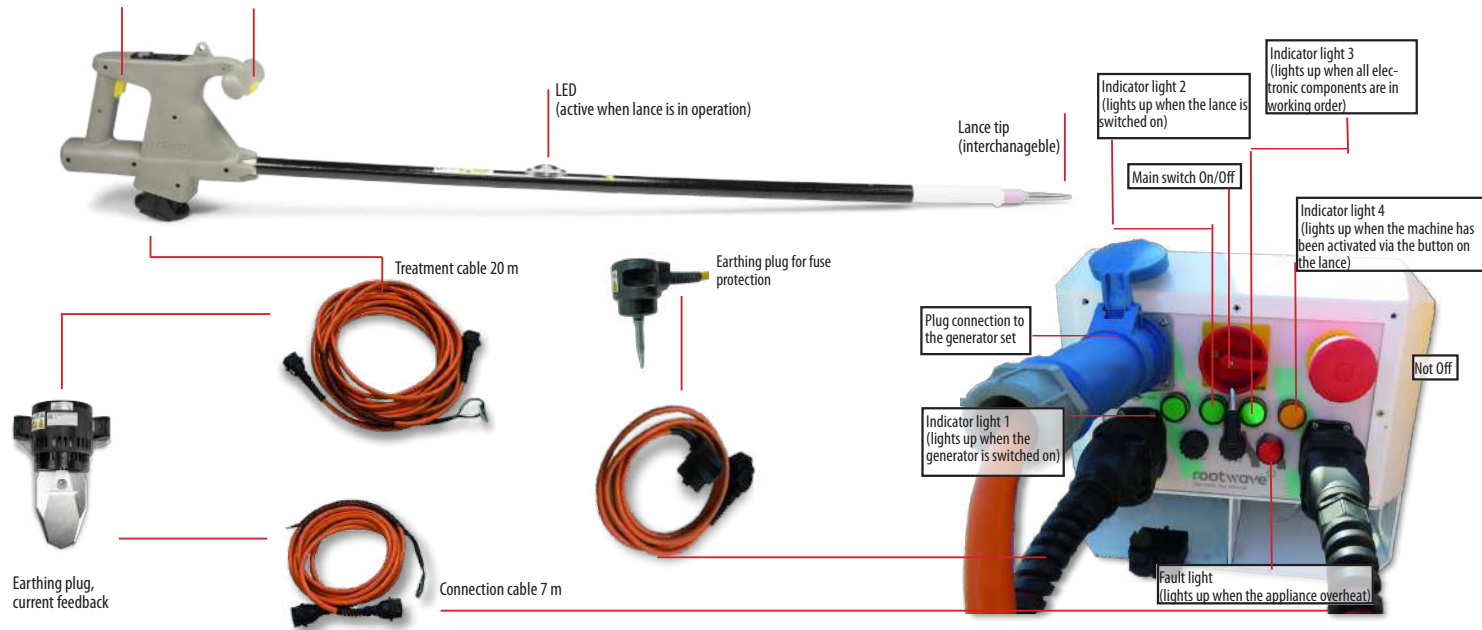
Model Number	Description	Price
K EW001	Electric Weeding Lance	£24,950

Part Number	Description	Price
K EW002	Safety Boots	£120



Electric lance Safety equipment

Safety buttons with 2-point operation: the lance will only operate if both buttons are pressed with both hands. In addition, the push buttons have an emergency stop when they engage deeply by finger pressure (2nd stage) and switch the lance off safely. This happens when one of the two push buttons is pressed through. This happens, for example, if you stumble; this is known as the grip reflex.



KERSTEN ELECTRIC LANCE IN ACTION



Kersten

SITE MAINTENANCE EQUIPMENT

**KERSTEN (UK) LTD
PROGRESS HOUSE
39 BOULTON ROAD
READING
RG2 0NH**

**0118 986 9253
INFO@KERSTENUK.COM**

KERSTENUK.COM

